

PARTIR EN  
*Cargo*



**ANZEX**

ASIA - NEW CALEDONIA



Port	Days
<b>HONG KONG</b> , Hong Kong	0
<b>CHIWAN</b> , China	1
<b>KEELUNG</b> , Taiwan	2
<b>SHANGHAI</b> , China	4
<b>NINGBO</b> , China	5
<b>CHIWAN</b> , China	8
<b>KAOHSIUNG</b> , Taiwan	10
<b>BRISBANE</b> , Australia	21

Port	Days
<b>AUCKLAND</b> , New Zealand	25
<b>PORT CHALMERS</b> , New Zealand	30
<b>LYTTELTON</b> , New Zealand	31
<b>NAPIER</b> , New Zealand	33
<b>TAURANGA</b> , New Zealand	34
<b>NOUMEA</b> , New Caledonia	37
<b>HONG KONG</b> , Hong Kong	49

## SHIP

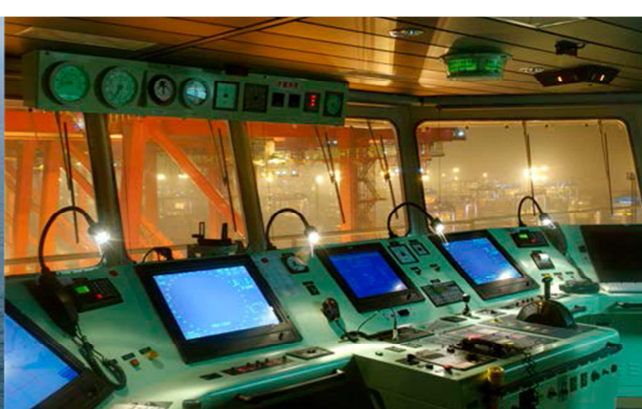
Bahamas      Flag      -      4 400      Teus

► CMA CGM PUGET

## Possibility to connect with the following lines

MEX, PEX 2, PEX 3, COLUMBUS LOOP, FAL1, FAL3, PEARL RIVER EXPRESS

Frequency: Every two months.



## CABINS & ENVIRONMENT DESCRIPTION AND PRICES

In order to have the ship specifications, cabins and tariffs please see attached documents.

Each cabin has a sitting area with a refrigerator, a desk, a wardrobe, a sofa, a bathroom (WC / shower / washbasin). All cabins are air conditioned.

For journey less than 10 days, the prices will be increased compared to the base price. Reservations can only be made less than 3 weeks before departure subject to availability (please contact us).

### ► **FORMALITIES (compulsory)**

Passport valid more than 6 months after the return date.

Visa for China

Visa for Australia

### Special note only for Shanghai :

► **Embarking passenger:** Visa type « M » or « C » mandatory

► **Disembarking passenger:** Visa type « M » mandatory

SHIP	TEU	FLAG	YEAR	COMMON AREAS	CABINS	CABIN N°	SUPERFICIE	BEDS
<b>PUGET</b>	4400	BAHAMAS	2008	Gym, Swimming Pool, Library, TV & DVD	spare officier	421	16 m <sup>2</sup>	1 bed – 1 person
					super cargo	506	13 m <sup>2</sup>	1 bed – 2 persons
					spare officier	516	16 m <sup>2</sup>	1 bed – 2 persons
					owner	513	22,1 m <sup>2</sup>	2 beds – 1 person

CABINES	DOUBLE CABIN (price per person and per day)	SINGLE CABIN ( price per day)
spare officier	110 €	120 €
super cargo	110 €	120 €
spare officier	110 €	120 €
owner	110 €	140 €

*The prices are per person and per day. They are in Euros and include full board and port taxes  
For stay less than 10 days, please contact us*